

# GeoBlocks: Building blocks for the quantification of uncertainties in geological models

Friedrich Carl (**LIH**) Lehrstuhl für Ingenieurgeologie und Hydrogeologie, RWTH Aachen

Jian Yang (**CG3**) Computational Geoscience, Geothermics and Reservoir Geophysics, RWTH Aachen

Carlos Colombo (**CG3**) Computational Geoscience, Geothermics and Reservoir Geophysics, RWTH Aachen

Gabriela Gonzalez (**GIA**) Lehrstuhl für Geologie und Paläontologie und Geologisches Institut, RWTH Aachen

23.10.2023

URS2023

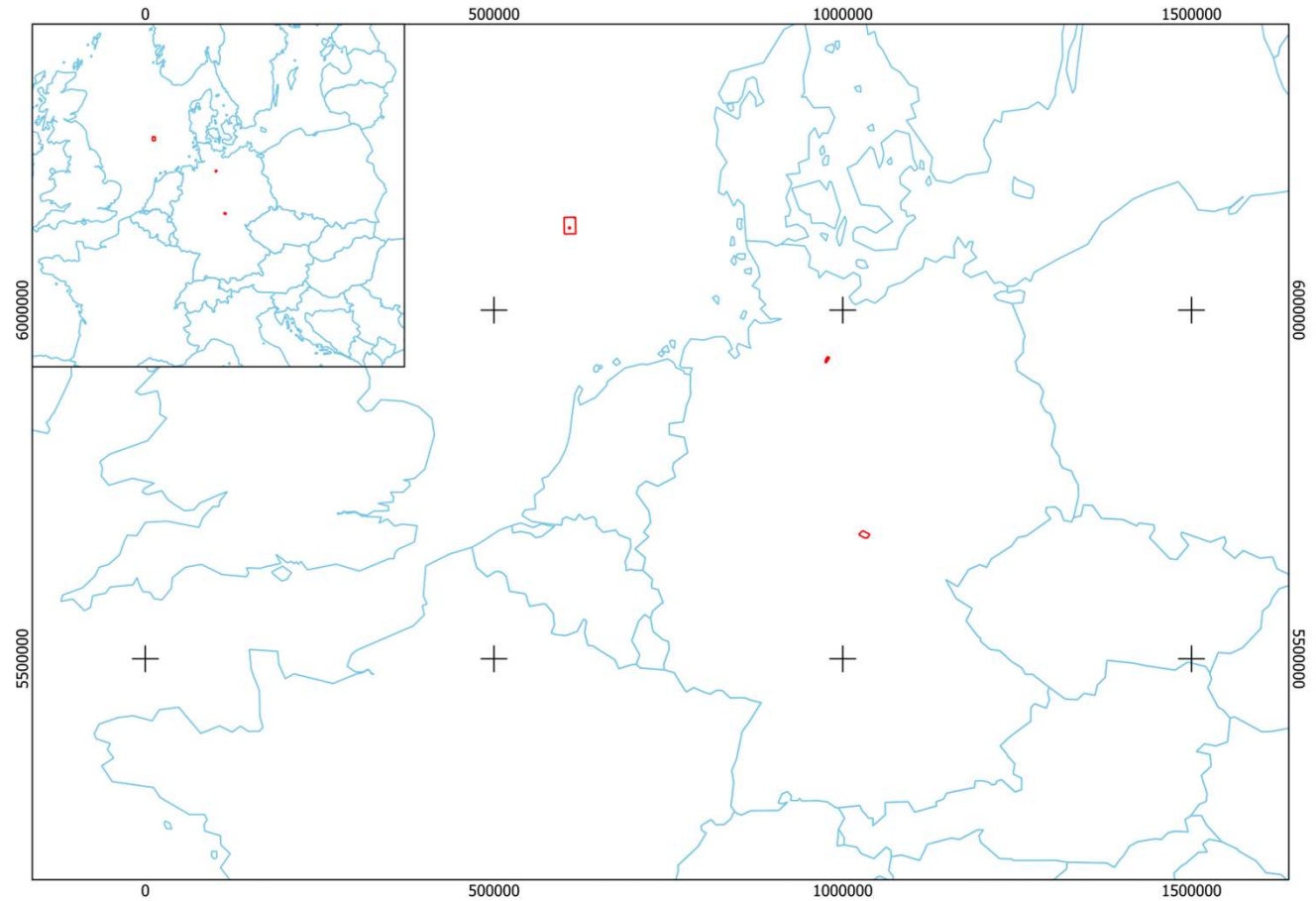
# Outline

---

- Study areas
- Work Progress
  - Input data per area
  - Quality control – Database (ongoing)
- Approaches
  - Analogous example – seismic case (ongoing)
- Discussion
- Next Steps

# Study areas

- Thüringer Becken
  - Staßfurt-Steinsalz
  - Werra Steinsalz
- Deutsche Nordsee
  - Belinda-Britta
- Niedersachsen und Bremen
  - Bahburg



# Work Progress

---

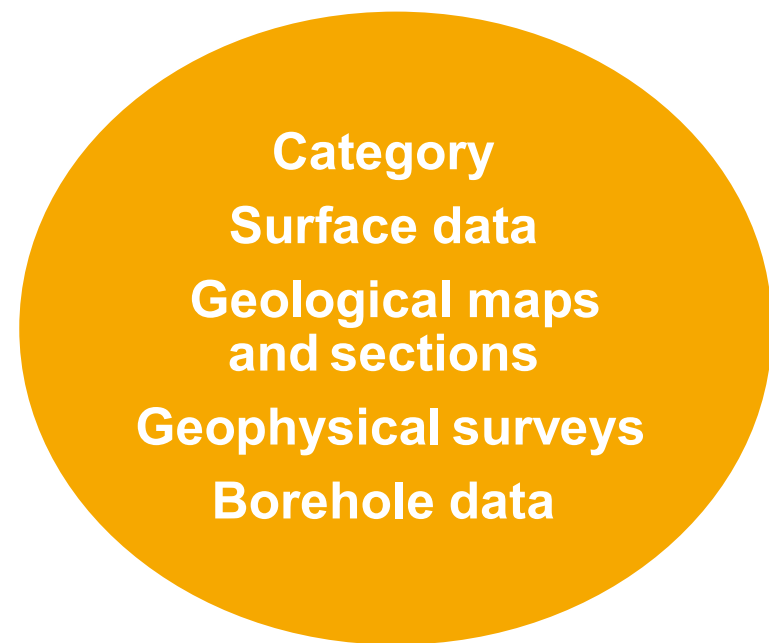
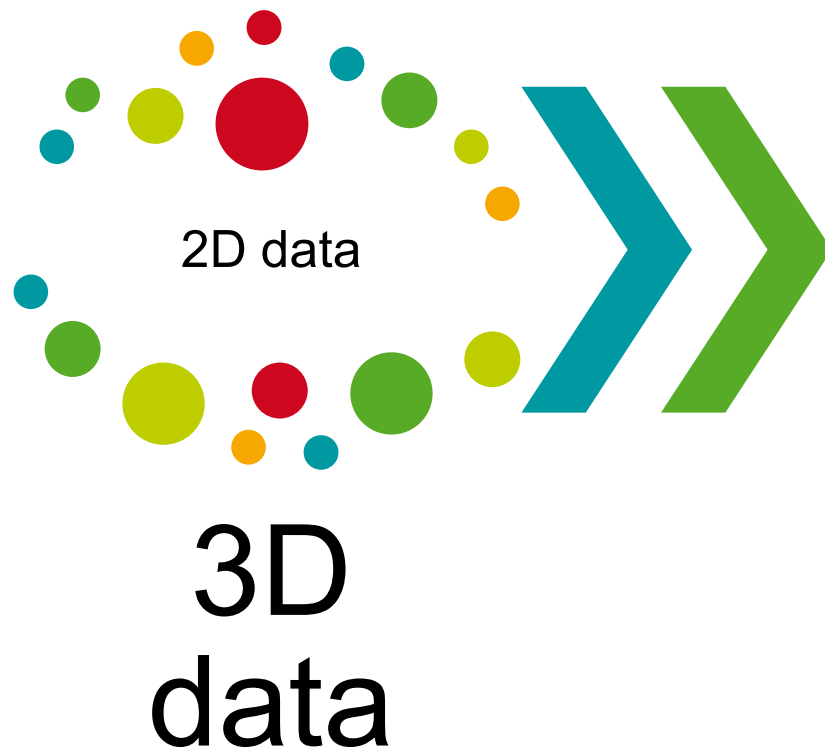
## Input data per area

Category	Data	Parameter to geomodelling
Surface data	Geological framework	Framework
	Stratigraphic	Topology analysis
	Sedimentology	Facies Structure
Geological maps and sections	Maps and sections	Structure
		Horizons Faults
Geophysical surveys	Seismic	Structure
		Horizons Faults
	Gravity	Structure
		delimitation
Magnetic	Structure delimitation	
Borehole data	Well tops	Structure
		Contacts

## Work Progress

---

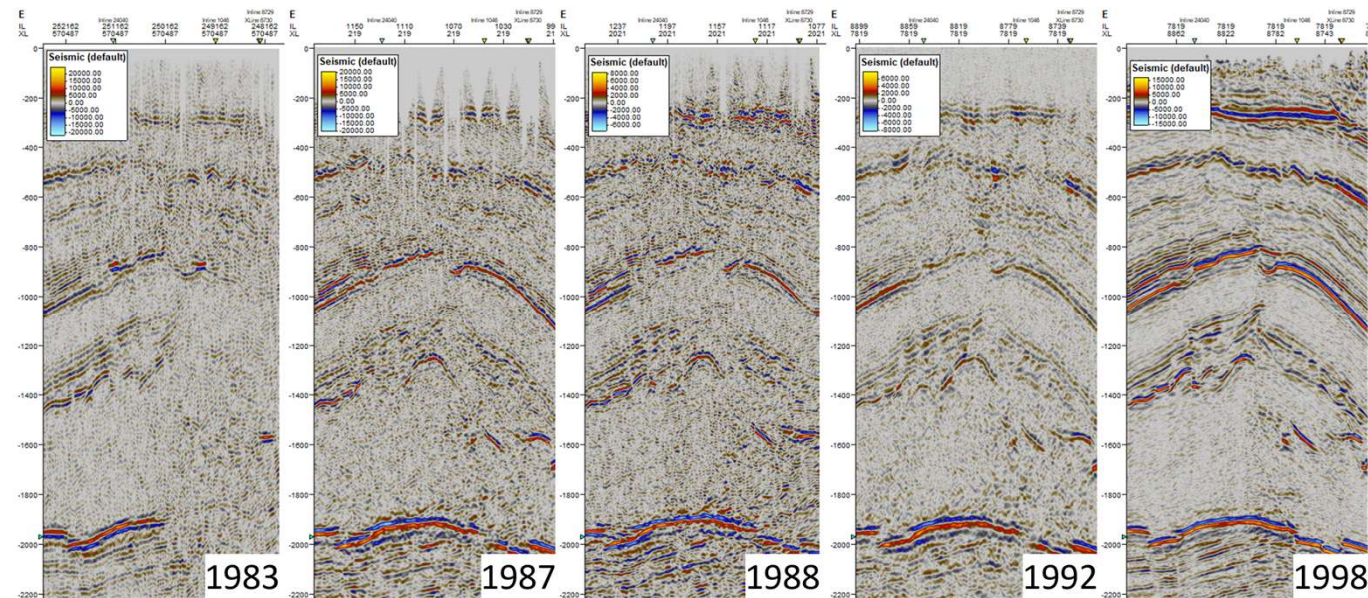
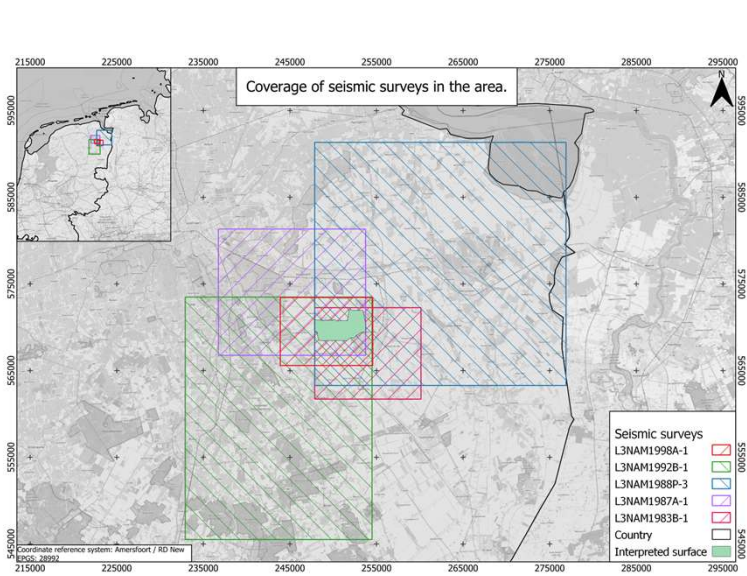
Quality control – Database (ongoing)

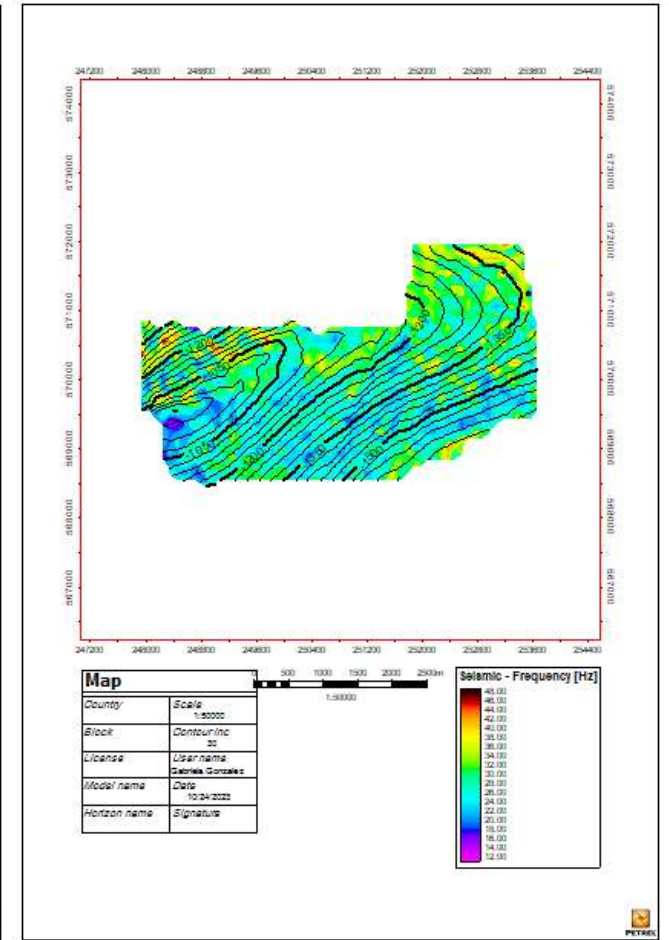
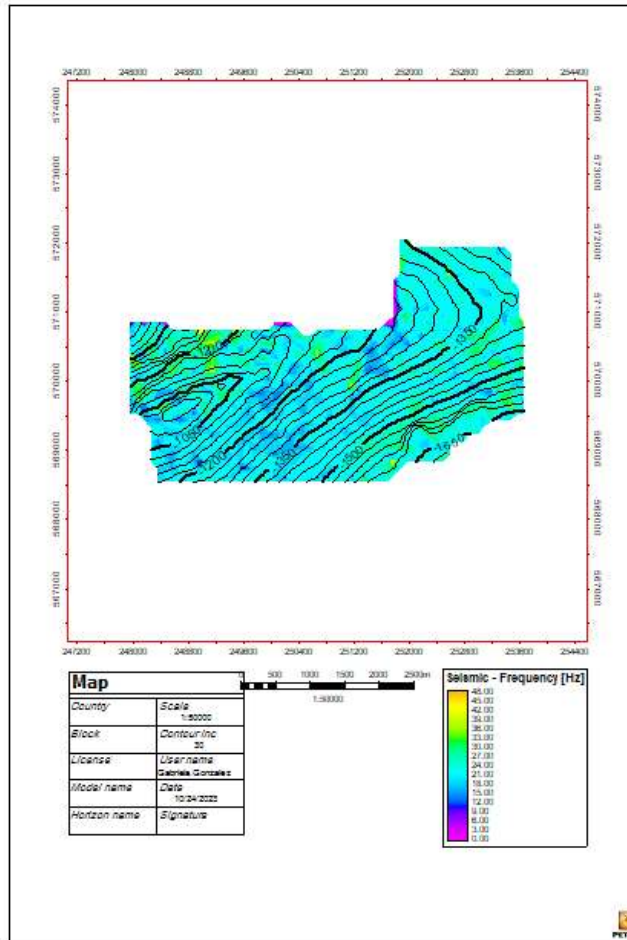
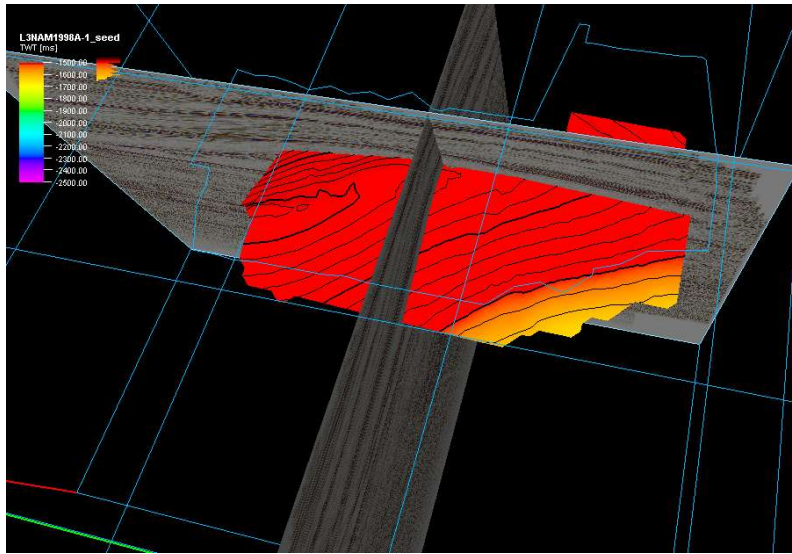




# Approaches

## Analogous example – seismic case (ongoing)





---

Test in best seismic with a frequency filter



Uncertainties in Gempy based on the different surfaces



Define control points for density data



# Thank you for your attention

Questions?

---

**URS2023**



**RWTH**AACHEN  
UNIVERSITY