

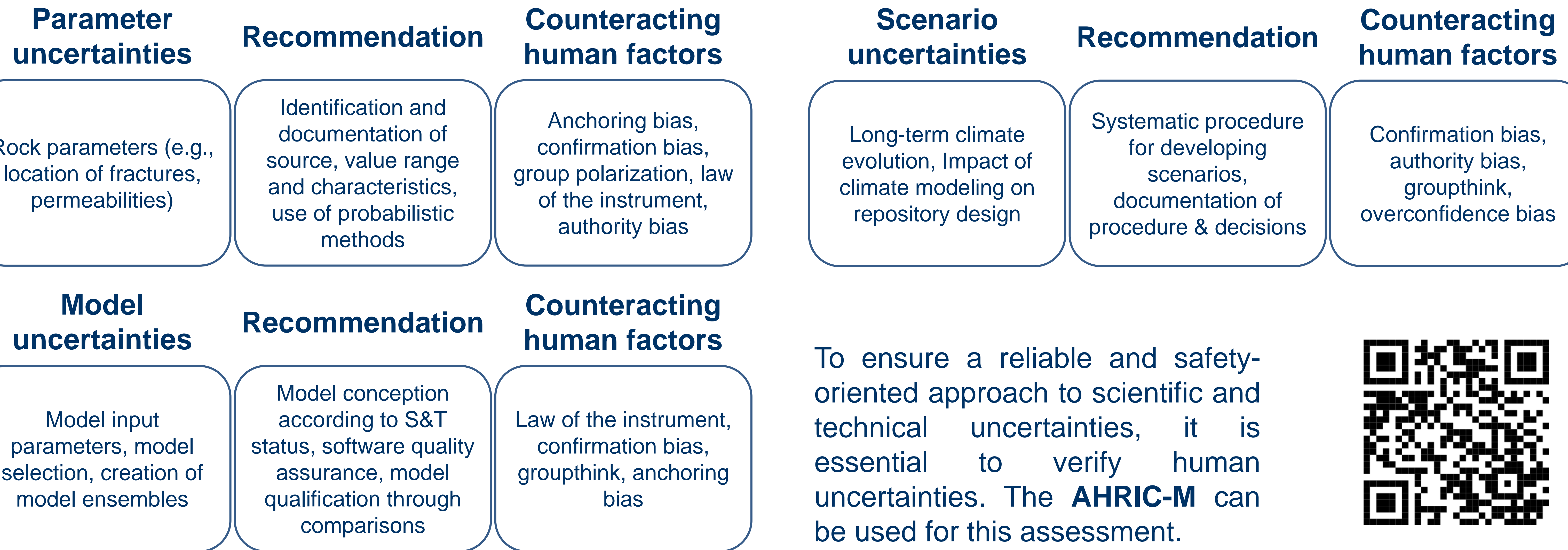
ENSURE - Use Case and Transferability

Fabian Fritsch¹, Oliver Sträter¹, Martina Heiermann², Dirk Kluge², Klaus-Jürgen Röhlig²

¹Work and Organizational Psychology, University of Kassel, ²Institute of Repository Research, TU Clausthal

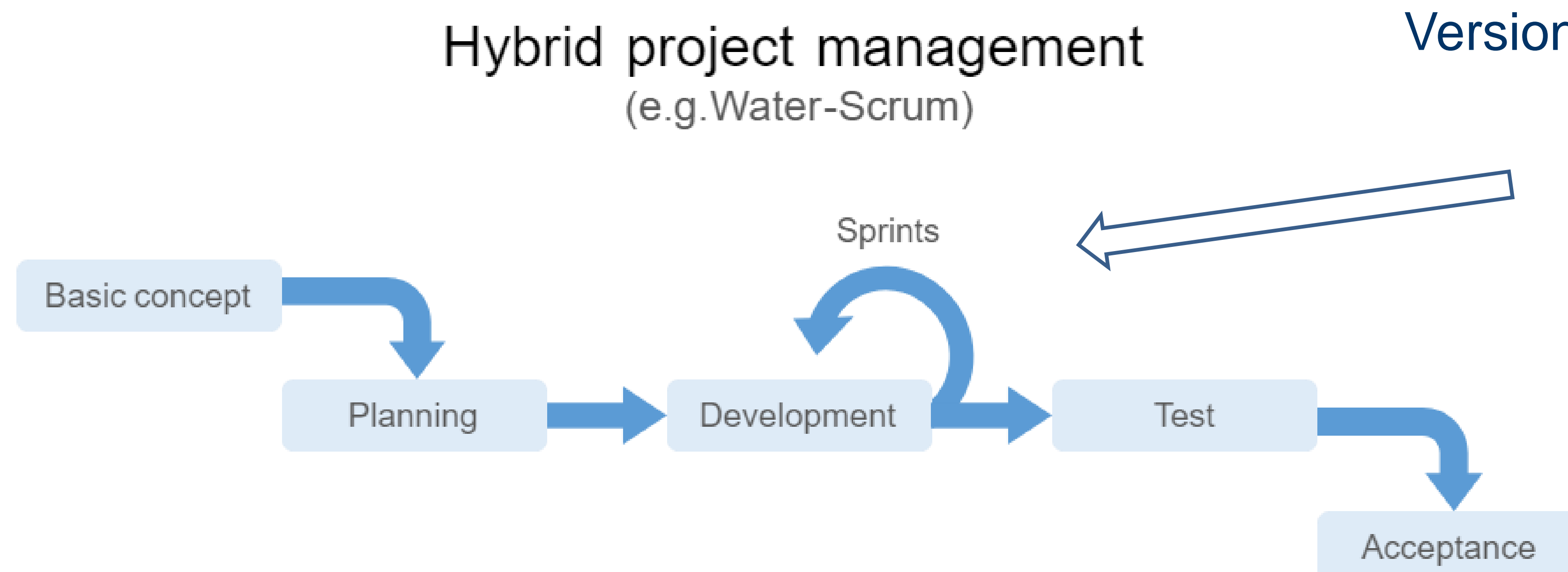
Interaction between the uncertainties

...An exemplary comparative overview of key aspects

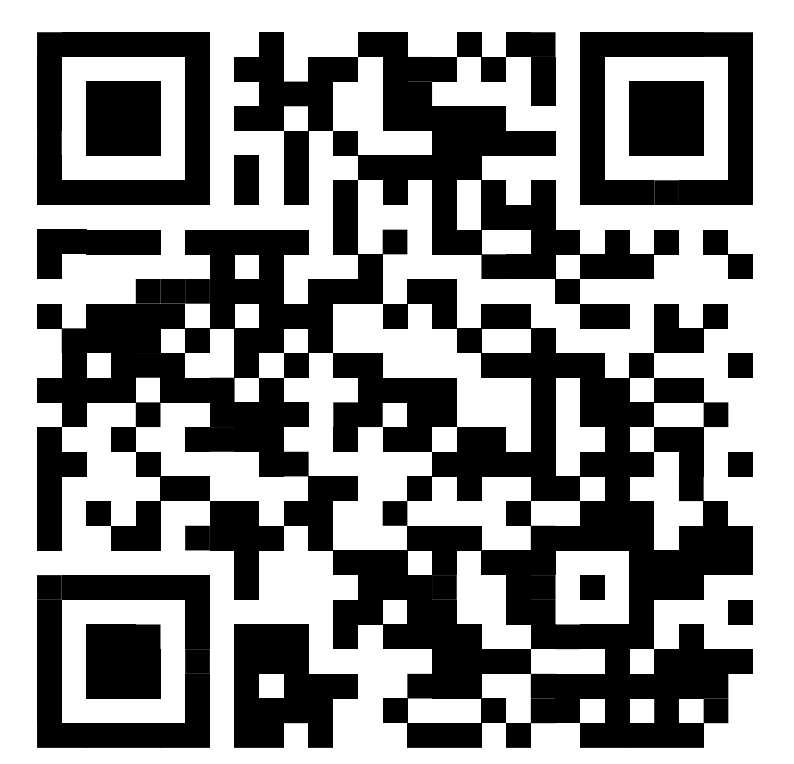


Transferability of the uncertainties due to human factors to the overall site selection process

The AHRIC method should be integrated into both traditional and agile project management approaches to strengthen the site selection process. This would help to systematically consider uncertainties due to human factors in project milestones and decision meetings.



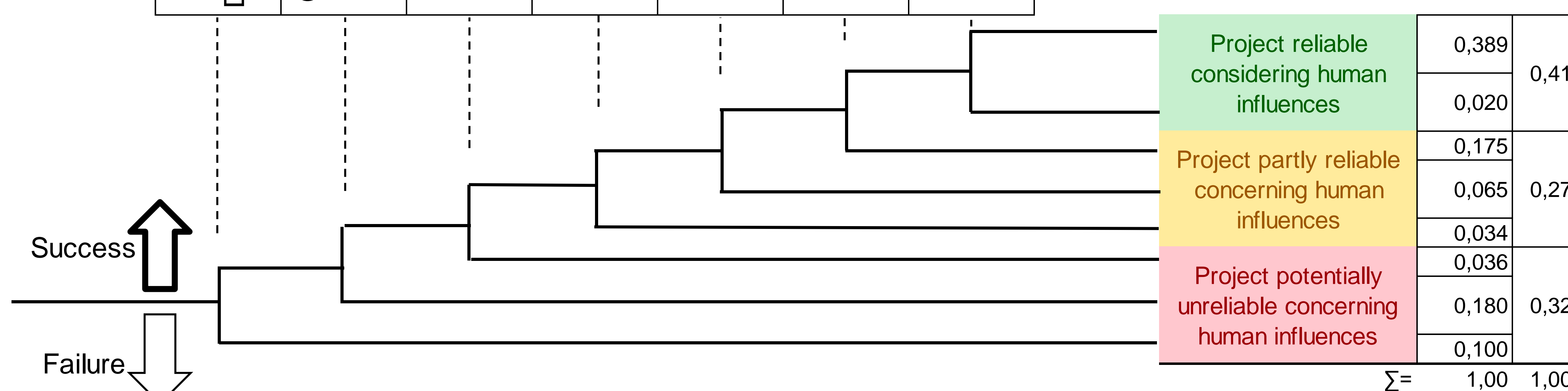
AHRIC – S (Screening Version with 9 Items)



Value for safety cases by the integration of human factors

p (Success)	0,9	0,8	0,95	0,95	0,9	0,7	0,95
$q=1-p$ (Failure)	0,1	0,2	0,05	0,05	0,1	0,3	0,05
	Problem analysis / Definition of the scope	Collection & selection of data, parameters, models	Model development	Model simulation (calculation runs)	Evaluation & Interpretation	Optimizations	Validation & Documentation

Human factors also play a role in the processes of the safety case. The quantification using hypothetical values illustrates the influence of uncertainty in exemplary phases.



We would like to extend our gratitude to the BGE for funding this project under the funding code STAFuE-21-4-Klei

